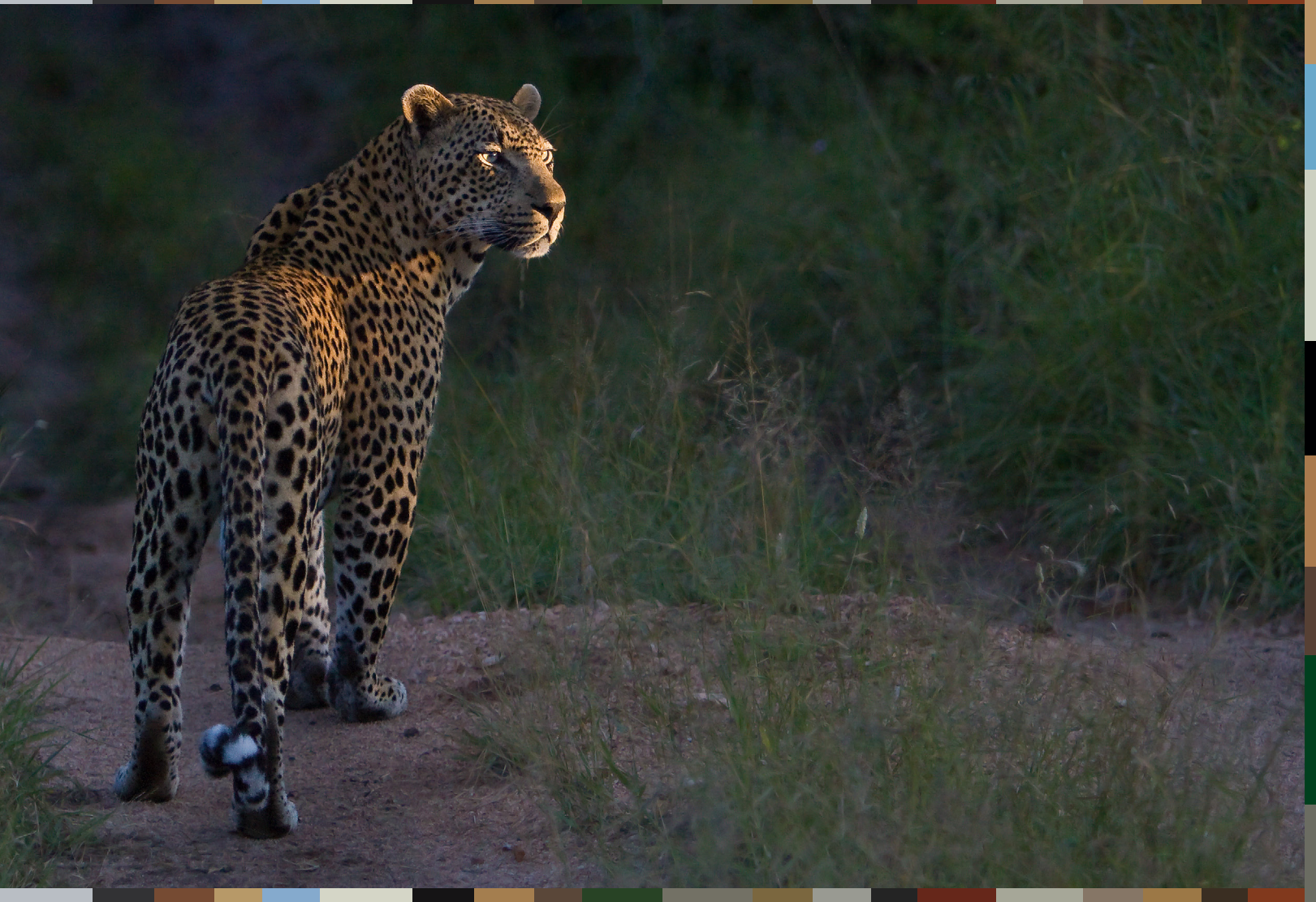


# SABI SABI

PRIVATE GAME RESERVE – SOUTH AFRICA  
ESTABLISHED 1979



## 2027/2028 — SABI SABI RATES

### CONTACT DETAILS:

Telephone: +27(11) 447-7172 | Email: [privatetravel@sabisabi.com](mailto:privatetravel@sabisabi.com) | Website: [www.sabisabi.com](http://www.sabisabi.com)  
P O Box 52665, Saxonwold, 2132, South Africa

Sabi Sabi  
Rates

Children's  
Policy

Payment Terms &  
Conditions

## 2027/2028 - SABI SABI RATES

Validity: 1 March 2027 – 29 February 2028

Page 1 of 1  
**VIEW NEXT**

### RATES QUOTED BELOW ARE PER PERSON SHARING PER NIGHT

<b>BUSH LODGE</b>	
LUXURY SUITES	<b>R29 600</b>
LUXURY VILLAS (INCLUDES A PRIVATE SAFARI VEHICLE)	<b>R149 000</b> PER VILLA PER NIGHT UP TO 4 PEOPLE. THEREAFTER A RATE OF R29 600 PER PERSON PER NIGHT WILL APPLY OR RELEVANT CHILDREN'S AGES (WHERE APPLICABLE, CHILDREN UNDER 6 YEARS WILL BE CHARGED AT THE 6 YEAR OLD RATE). MAXIMUM OF 6 PER VILLA.
<b>CHILDREN @ BUSH LODGE</b>	
6 – 7 YEARS	<b>R11 600</b>
8 – 12 YEARS	<b>R14 900</b>
13 YEARS AND OLDER	<b>ADULT RATE</b>

RATES ARE QUOTED PER CHILD PER NIGHT SHARING WITH 1 OR 2 ADULTS. Children occupying their own room will pay the full adult rate for a maximum of 1 child (if 4 children sharing the remaining 3 will pay the applicable children's rates).

<b>SELATI CAMP*</b>	
LUXURY SUITES	<b>R31 800</b>
LOURENCO MARQUES HONEYMOON SUITE	<b>R34 100</b>
IVORY PRESIDENTIAL SUITE (INCLUDES A PRIVATE SAFARI VEHICLE)	<b>R44 000</b>
<b>LITTLE BUSH CAMP*</b>	
LUXURY SUITES	<b>R32 900</b>
<b>EARTH LODGE*</b>	
LUXURY SUITES	<b>R44 000</b>
AMBER VILLA (INCLUDES A PRIVATE SAFARI VEHICLE)	<b>R165 000</b> PER VILLA UP TO 4 PEOPLE. THEREAFTER A RATE OF R29 600 PER PERSON PER NIGHT WILL APPLY. (MAXIMUM 6 PER VILLA)

\*Providing there is exclusivity of either Lodge with family and/or friends children may be allowed and rates are available on request

### Christmas Peak Period – (20 December 2027 – 5 January 2028)

A Christmas Peak Period surcharge of 15% will apply to all bookings arriving between 20 December 2027 and 5 January 2028. The surcharge will apply to the entire booking regardless of check out date.

### SINGLE ROOM POLICY – (Excludes 20 December 2027 – 5 January 2028)

There will be no single supplement for up to a maximum of 2 suites per booking. Thereafter, guests occupying single suites will be levied a supplement of an additional 50% of the specified daily rate. The Single Supplement will not be levied on a maximum of 2 suites per reservation, excluding the Lourenco Marques Honeymoon suite and Ivory Presidential suite at Selati Camp, where the Single Supplement will always apply.

The above rates are per person sharing per night and include open vehicle safaris by day and at night, environmental awareness walking safaris, breakfast, lunch, "boma" dinner, all drinks excluding French Champagne and Private Collection Cellar Wines, limited Laundry service (no dry cleaning available), WiFi and transfers to and from the Sabi Sabi airstrip. Our rates include government taxes (VAT).

Optional extras available are spa treatments at the Amani Spa, a selection from our Private Collection of Wines and French Champagne, boutique purchases, telephone calls, and transfer to and from Skukuza Airport.

All rates exclude the Sabie Game Reserve (SGR) Conservation Levy of **R495** (VAT inclusive) per person per night. The conservation levy supports conservation, security and access-control and the anti-poaching initiatives of the Sabie Game Reserve NPC, a non-profit company.

Sabi Sabi reserves the right to change rates without notice subject to implementation or variations of taxes or levies by any authority or the government.

## SABI SABI CHILDREN'S POLICY

1 March 2027 – 29 February 2028

Page 1 of 1  
VIEW NEXT

### CHILDREN'S TERMS

#### CONDITIONS

- a. Children under the age of 6 years are not permitted at Bush Lodge unless a Luxury Villa has been booked.
- b. In the case of a Luxury Villa booking at Bush Lodge, where a private vehicle is included, children under the age of 6 years may accompany their parents / guardians on safari. At the Rangers discretion, restrictions at sightings due to possible disturbance to animals and / or guests on other vehicles may apply.
- c. No children under the age of 12 years are permitted on the environmental walking safari.
- d. Child Minders can be arranged from a minimum rate of **R350-00** per child per hour which is to be paid directly to the child minder.
- e. Child Minders are to be booked with reception on arrival.
- f. Children 4 years and younger will not be allowed in the boma for dinner. Dinner will be arranged in the Safari Lounge between 17h00 and 19h00 or as room service. Breakfast and lunch as per normal with parents/guardians.
- g. Sabi Sabi reserves the right of allowing or disallowing children on safari for any possible reason and this is at the discretion of the General Manager/Ranger of the vehicle.
- h. The Children's Policy and Rates applies to standard, group and exclusive use reservations.

#### ELEFUN CENTRE – BUSH LODGE

- a. Target age group: 4 - 12 years.
- b. Children under 4 years need to be accompanied to the centre by an adult (parent, family member or child minder, which may be booked through Reception).
- c. When there are evening activities in the lounge, children under 4 years need to be accompanied by an adult (parent, family member or child minder, which may be booked through Reception).
- d. When the EleFun Centre Coordinator is supervising the children in the evening, her responsibility ends at 21h30, after which time a child minder may be booked to sit with the children.

# PAYMENT TERMS & CONDITIONS

Page 1 of 5  
**VIEW NEXT**

1 March 2027 – 29 February 2028

These Terms and Conditions will apply to all bookings made or amended by any person, whether such booking is made by an agent or operator for its clients or by a guest making a booking directly (“you”, “your”), with the Sabi Sabi Collection (Pty) Ltd (“Sabi Sabi”, “us”, “we”) for less than 16 people at Sabi Sabi Private Game Reserve (“the Game Reserve”) for stays after 1 March 2027.

## 1 Booking and Payment

- 1.1 Bookings will provisionally be held for 7 days and thereafter, automatically released. During peak periods, a provisional reservation will be held for 5 days.
- 1.2 Quotations are valid for the dates specified and are subject to adjustment if the services quoted are not available at the time of booking confirmation.
- 1.3 On confirmation, a 50% deposit is required to secure the reservation, with 25% of the total value of the reservation being non-refundable and non-transferable for bookings over non-Peak Periods.
- 1.4 The full balance of payment is required 60 days prior to arrival. Deposits are subject to the booking terms and conditions set by all suppliers involved.
- 1.5 Should you make any changes to your booking prior to the final pro-forma invoice being raised, the Reservation Value will be adjusted accordingly. Sabi Sabi reserves the right to request a proportionate increase in your deposit, should the changes to your booking result in an increase in the Reservation Value.
- 1.6 Sabi Sabi reserves the right to request payment by credit card or via secure online payment portal to secure all short lead time bookings which have been confirmed within 7 (seven) days of travel.
- 1.7 Reservations made within 60 days of the check-in date will require full payment of the Reservation Value within 5 working days of the date of the confirmation of reservation and pro-forma invoice.

<b>RESERVATIONS MADE MORE THAN 60 DAYS FROM CHECK-IN DATE:</b>	
Confirmation of booking:	50% of Reservation Value
60 days from arrival	50% of Reservation Value
<b>RESERVATIONS MADE WITHIN 60 DAYS FROM CHECK-IN DATE:</b>	
Confirmation of booking:	Reservation Value paid in full

- 1.8 The complete itinerary will contain information about the accommodation, the type of rooms provided, meals, drinks, transfers, and transportation, if applicable. Please note that the guest will be responsible for the following expenses, which will be charged separately: any expenses related to obtaining passports and visas, personal items such as drinks, laundry, phone calls, and additional baggage fees are not included in the reservation price.
- 1.9 The guest is responsible for any amendments, reduction of guests, or rooms needed by informing Sabi Sabi.
- 1.10 Please note that prices may be adjusted in case of changes in currency exchange rates, government imposed taxes, airline taxes, fuel prices, airfares, hotel charges, tourism levies. From time to time, the prices of supplier services may vary. Any changes will be communicated to you in writing.

# PAYMENT TERMS & CONDITIONS

1 March 2027 – 29 February 2028

1.11 Once a quote has been accepted and a reservation made, whether through email or otherwise, it signifies acceptance of the Terms & Conditions outlined in this agreement and any supplementary terms and conditions from suppliers, by the traveler. This agreement extends to all travelers within the lead traveler’s party, with the lead traveler undertaking to disseminate these terms to every member and ensuring timely payment. Each traveler is responsible for acquainting themselves fully with our terms and conditions.

1.12 Furthermore, we retain the right to amend these Terms & Conditions periodically.

1.13 We prefer payment via direct bank transfer, with payment to be made in the currency specified on the invoice and to the bank account provided on the invoice/statement. The payer is responsible for any bank charges incurred. If payment is made incorrectly in a foreign currency, the payer will be billed for foreign exchange commission charges.

## 2 Cancellations

2.1 If any amount is not paid on the due date thereof, Sabi Sabi will be entitled to cancel your reservation immediately on written notice to you.

2.2 Cancellations made between 30 and 60 days prior to arrival will incur a 50% cancellation fee based on the total invoice value.

2.3 Cancellation fees will apply for cancellations made within 30 days of arrival, with a fee of 100% of the total invoice value.

2.4 Cancellation requests made during the trip or stay will result in a 100% cancellation fee based on the total invoice value.

2.5 25% of the total reservation value is non-refundable and non-transferable. During Peak-Periods, the nonrefundable amount increases to 50%.

2.6 Should you wish to cancel or amend a booking, you must do so on written notice to Sabi Sabi. If written confirmation of an amendment or cancellation is not issued within 24 hours from delivery thereof, you are required to confirm your written amendment or cancellation telephonically, failing which your booking will be deemed not to be cancelled or amended.

2.7 A reduction of the number of rooms under a booking will be a cancellation and the cancellation policy below will apply in respect of the relevant rooms.

2.8 During Peak-Periods, the non-refundable amount increases to 50%.

2.9 Please note that cancellation fees may vary among suppliers and may differ from percentages quoted below.

2.10 If you cancel a booking the following cancellation fees will apply.

Days prior to check-in:		0 - 30	60 - 30	During Travel
Cancellation Fee:	25% of the total value of the reservation (or 50% over Peak-Periods) is non-refundable, nor transferable.	100% of Reservation Value 50% of Reservation Value	50% of Reservation Value 25% of Reservation Value	100% of Reservation Value 5% of Reservation Value

# PAYMENT TERMS & CONDITIONS

1 March 2027 – 29 February 2028

### 3 Single Supplement

Guests occupying single suites at Bush Lodge, Selati Camp, Earth Lodge and Little Bush Camp will be levied a supplement of an additional 50% of the specified daily rate (“Single Supplement”). The Single Supplement will not be levied on a maximum of 2 suites per reservation, excluding the Lourenco Marques Honeymoon suite and Ivory Presidential suite at Selati Camp where the Single Supplement will always apply.

### PEAK-SEASON BOOKINGS

#### 4 Booking and Payment

- 4.1 Sabi Sabi will hold a reservation without payment for a period of 5 days. If a reservation is not confirmed, in writing, within 5 days from the reservation request being submitted to Sabi Sabi, the reservation will automatically terminate without further notice.
- 4.2 Should you confirm the reservation request, a pro-forma invoice, indicating the booking value, including the conservation levy (“the Reservation Value”) will be raised and a deposit is payable within 5 working days of the date of the pro-forma invoice.
- 4.3 The deposit will be 50% of the Reservation Value, as quoted in the pro-forma invoice.
- 4.4 Should you make any changes to your booking prior to the final pro-forma invoice being raised, the Reservation Value will be adjusted accordingly. Sabi Sabi reserves the right to request a proportionate increase in your deposit, should the changes to your booking result in an increase in the Reservation Value.
- 4.5 A final pro-forma invoice will be issued before 1 October, prior to your check-in date. Final payment must be made no later than 30 September, prior to your check-in date.
- 4.6 Bookings made after 30 September will require full payment of the Reservation Value within 5 working days of the date of the confirmation of reservation and pro-forma invoice.
- 4.7 Minimum nights’ restriction may apply during Peak-Season subject to certain suppliers involved.
- 4.8 Single Supplement: Guests occupying single suites at Bush Lodge, Selati Camp, Earth Lodge and Little Bush Camp will be levied a supplement of an additional 50% of the specified daily rate.

<b>BOOKINGS MADE BEFORE 30 SEPTEMBER:</b>	
Confirmation of booking:	50% of Reservation Value
30 September	50% of Reservation Value
<b>BOOKINGS MADE AFTER 30 SEPTEMBER:</b>	
Confirmation of booking:	Reservation Value paid in full

# PAYMENT TERMS & CONDITIONS

1 March 2027 – 29 February 2028

Page 4 of 5  
**VIEW NEXT**

## 5 Flight Bookings and Conditions

- 5.1 Please note that it is the responsibility of the guests or passengers to carefully check and correct any errors in their flight reservations. All airlines require the passengers' full names to match their passports. Sabi Sabi cannot be held responsible for any mistakes with regards to spelling errors, incorrect names or any other incorrect information entered by the guests during travel.
- 5.2 Flight bookings are non-transferable and name changes are not permitted.
- 5.3 All flights where required, would need to be paid in full at time of reservation.
- 5.4 Kindly be advised that Sabi Sabi contracts all air travel services to independent operators. Consequently, we cannot assume liability for flight delays, inaccuracies in flight schedules, or instances of airline insolvency, business rescue, or liquidation that may arise.
- 5.5 For flights any name changes and date-change penalties can amount up to the full flight ticket purchase price, subject to the fare rules of the tickets.
- 5.6 It is necessary to use flight tickets in the order they are booked, otherwise they will be forfeited.

## 6 Compliance Travel Documentation

- 6.1 Sabi Sabi disclaims any responsibility for passengers traveling with incorrect travel documentation.
- 6.2 All Guests are solely responsible for obtaining visas, re-entry permits, unabridged birth certificates, and any necessary health certificates.
- 6.3 Guests are solely responsible for obtaining any required vaccinations and/or prophylactics, such as those for malaria.
- 6.4 Passports are required to have a validity of at least 6 months from the return date and must contain a minimum of 2 blank pages.

## 7 Insurance

All guests and their personal belongings must be adequately covered by a travel insurance policy covering at least injury, death, medical costs, emergency evacuation, repatriation, loss of or damage to personal belongings (due to theft or otherwise) and cancellation. It is recommended to purchase comprehensive travel insurance, including "cancel for any reason" coverage to ensure that any lost funds can be covered. Proof of Insurance will be requested prior to arrival.

## 8 Applicable Laws

These terms and conditions will be construed, interpreted and subject to the laws of the Republic of South Africa. The courts in the Republic of South Africa shall have exclusive jurisdiction in respect of any claim, demand, dispute or controversy arising from these terms and conditions.

## 9 Address of Receiving Notices

Your address for receiving notices in terms of these terms and conditions will be the address set out in the Reservation Form. All written communication may be sent to the e-mail address set out in the Reservation Form.

## PAYMENT TERMS & CONDITIONS

Page 5 of 5  
END

1 March 2027 – 29 February 2028

### 10 Force Majeure

If Sabi Sabi Private Travel is prevented or restricted, directly or indirectly, from fulfilling any of its obligations due to causes beyond its reasonable control (including, but not limited to: declared or undeclared war, acts of terrorism, sabotage, civil disturbances, riots, insurrection, strikes, lock-outs, fire, explosions, forceful winds, floods, sickness, epidemics, pandemics, quarantines, government intervention, weather conditions, defects in machinery and vehicles, and acts of God), Sabi Sabi shall be relieved of its obligations during the period of such event. It shall not be liable for any loss or damages suffered by the traveler due to or resulting from such delay or failure, provided that Sabi Sabi Private Travel gives written notice of its inability to perform within 48 hours of becoming aware of the force majeure event, to the extent reasonably possible. In the event of force majeure, Sabi Sabi Private Travel, where reasonably possible, shall make commercially reasonable efforts to mitigate or limit the duration or effects of the circumstances giving rise to force majeure. It may delay or suspend its performance due to the relevant force majeure event.

### 11 General

- 11.1 All refunds are subject to a 5% handling fee to cover bank charges and administration.
- 11.2 Flight cancellations or delays, regardless of cause (third-party operators abide by aviation regulatory authorities), are not the responsibility of Sabi Sabi Private Travel for any resulting loss sustained by travellers.
- 11.3 Comprehensive travel insurance is strongly advised to mitigate such risks.
- 11.4 Non-refundable charges: Any significant alterations to a confirmed itinerary (not constituting a cancellation) that incur costs or time from Sabi Sabi will result in a 25% non-refundable fee based on the total reservation value.
- 11.5 All guests must provide confirmation of country of origin and contact details for all travellers quoted and travelling.
- 11.6 Travellers must ensure they possess valid and accurate passport, visa, and vaccination documentation required for all countries in their itinerary.
- 11.7 Consult a healthcare professional for guidance on necessary prophylaxis and vaccination requirements for all destinations.
- 11.8 Before participating in certain activities, entering facilities, or travelling to specific destinations, travellers may be required to agree to additional terms or sign an indemnity containing exclusions or limitations of liability.
- 11.9 Travellers should note that some journeys may involve remote areas with limited facilities and close encounters with wildlife; a waiver and consent form must be signed before travel.

By proceeding with your booking, you acknowledge and accept these terms and conditions.